

THE BENTLY RESERVE

ADDRESS

Financial District

301 Battery St.
 San Francisco, CA 94111
 Phone: 415-288-0202, ext. 400
 Fax: 415-288-0203
 Web Address: www.bentlyreserve.com
 E-mail: vivian.perez@bentlyreserve.com

BOOKING INQUIRIES

The Bently Reserve

301 Battery St.
 San Francisco, CA 94111
 Phone: 415-288-0202, ext. 400
 Fax: 415-288-0203
 Web Address: www.bentlyreserve.com
 E-mail: vivian.perez@bentlyreserve.com
 Attention: Vivian V. Perez, CMP

LOCATION

The Bently Reserve Conference Center is located in the heart of downtown San Francisco. This key location gives the Reserve the advantage of serving both the local and out-of-town business communities and the tourist industry, making it one of San Francisco's premier event destinations.

The Reserve is close to Four-Star hotels, fine dining, shopping, ample parking, as well as BART and Muni stations and cable cars — making it readily accessible to both Bay Area residents and out-of-town guests.

- One mile to The Moscone Center
- 14 miles to San Francisco International Airport
- 18.5 miles to Oakland International Airport

CLASSIC DESIGN. TIMELESS ELEGANCE.

Formerly the historic San Francisco Federal Reserve, the Bently Reserve is now the West Coast's premier destination for social events, meetings, fundraisers and conferences.

Undoubtedly San Francisco's most celebrated event space, the Bently Reserve Banking Hall represents the pinnacle of elegance. No details were overlooked in its intricate design and classic decor: hand-painted travertine on the walls echoes the genuine marble floor tiles while the chandeliers, personally designed by the architect and installed in the early 1920s, have been meticulously reconditioned to their original splendor. Modern recess lighting has been subtly added to heighten the breathtaking effect of this space.

As versatile as it is beautiful, the Banking Hall includes a mezzanine floor and an outdoor balcony, both of which are perfect for cocktail receptions, and a grand staircase provides a sensational way to make an appearance. Complementing this magnificent ambiance is our exclusive list of preferred caterers, including some of San Francisco's finest culinary artists and event specialists. This is a truly unforgettable place to host anything from conferences and fundraisers to product launches and social events.

INNOVATIVE MEETINGS AND CONFERENCES

The Bently Reserve Conference Center is the epitome of everything San Francisco: it boasts the West Coast's most advanced networking technologies, unparalleled eco-friendly operations, and the legendary style of the Financial District's most distinguished building. Discover what it means to do business at the venue that defines our city's traditions.

Seven distinguished boardrooms, a comfortable lounge, and the Banking Hall itself constitute this versatile conference center. A nod to the unique nautical history of the Bay Area, our meeting rooms are named after — or inspired by — sunken ships in the Bay Area. The Apollo, our flagship meeting room, and its adjacent room, the Euphemia, are named after ships that lie beneath the foundations of the Bently Reserve itself.

State-of-the-art connectivity, high-definition audio, on-demand video capture and the latest digital videoconferencing equipment will meet your needs and surpass your expectations. High-speed Wi-Fi Internet access is available throughout the conference center, while a highly secure T1 internet connection is routed through a completely segregated network for speed and security. To fully optimize the audiovisual experience, a variety of custom equipment packages are available.



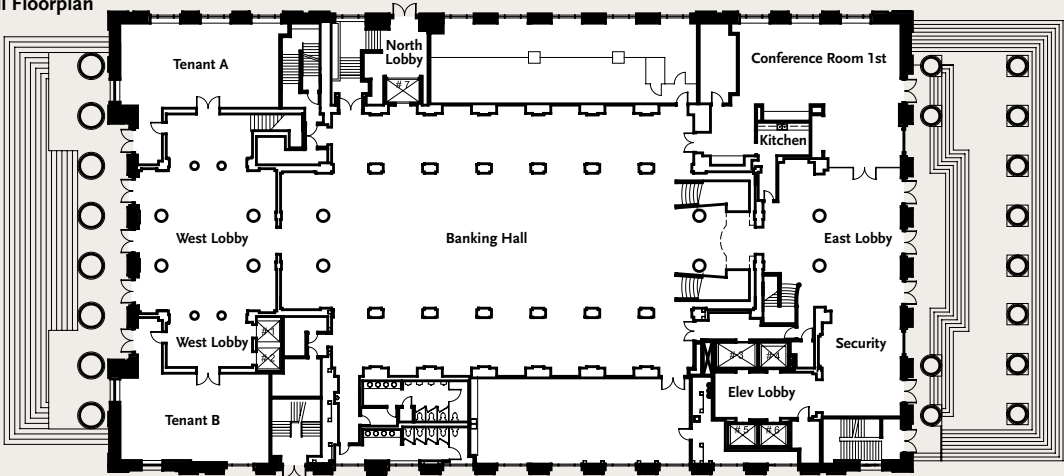
State-of-the-art technology. Legendary style. The Bently Reserve is the perfect place for your next event. Regarded as one of the most unique and eco-friendly venues in San Francisco, we host innovative meetings, cosmopolitan conferences, intimate gatherings and groundbreaking events. As a famously grand and state-of-the-art facility, this magnificent venue offers a one-of-a-kind setting for up to 650 guests. Included on the National Register of Historic Places, the Bently Reserve serves as a monument to San Francisco's vast architectural history. Built by celebrated architect George W. Kelham in 1924, it combines contemporary San Francisco style with a colorful past and a greener future.

GREEN FEATURES

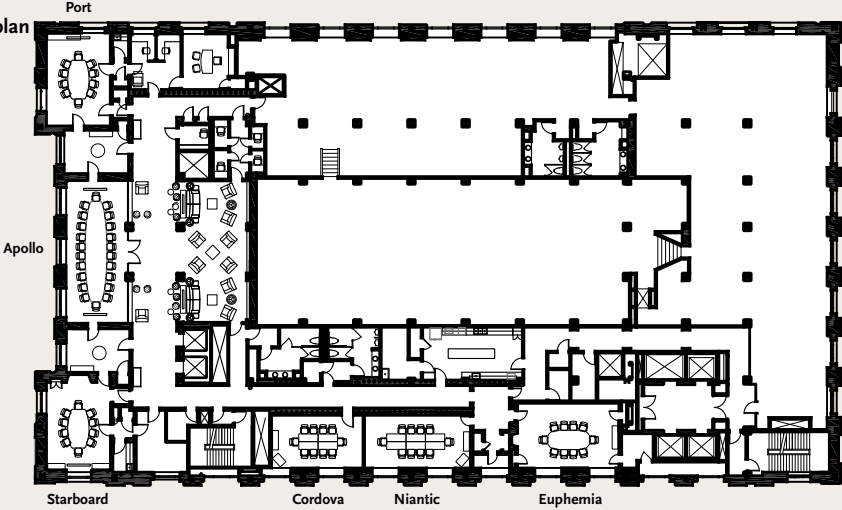
Amenities: low-VOC paints; sustainable wood flooring; and a building-wide recycling program. Functional core upgrades: a revised HVAC system and energy-efficient central lighting systems.

THE BENTLY RESERVE

Banking Hall Floorplan



Meeting Space Floorplan



ROOM NAME	DIMENSIONS	SQUARE FEET	CEILING HEIGHT	SUGGESTED CAPACITIES			
				THEATER	RECEPTION	BANQUET	CLASSROOM
Banking Hall	-	8,045	-	250	650	400	180
Apollo Meeting Room	-	547	-	-	-	-	-
Port Meeting Room	-	486	-	-	-	-	-
Starboard Meeting Room	-	485	-	-	-	-	-
Niantic Conference Room	-	388	-	30	39	31	18
Cordova Conference Room	-	322	-	25	32	26	15
Euphemia Meeting Room	-	494	-	-	-	-	-
Gateway Conference Room	-	866	-	67	87	69	39